






Crawler Excavator | TC 240 LC, TC 240 NLC



-  max. 25,1 t
-  125 kW (168 hp)
-  0,48 - 1,87 m³



CRAWLER EXCAVATOR TC240

Technical Information

ENGINE

COM III exhaust level	Cylinder capacity 6,700 cm ³	Battery 2x 12 V/100 Ah
Power according to ISO 9249..... 125kW (168 HP)	Number of cylinders 6	Alternator..... 24 V/70 Ah
RPM 2000/min	Automatic idle Standard	Starter..... 24 V/3.2 kW
Make/model..... Cummins QSB 6.7	Cooling system Water-cooled	
Design..... Turbocharger/LLK	Air filter Dry air filter	

HYDRAULICS SYSTEM

<ul style="list-style-type: none"> • 2 maximum-load-controlled high-performance piston pumps • Dual-circuit hydraulics system • 7 standard consumer loads in one control block • Hydraulischer Anbausatz für Greifen serienmäßig (ohne Drehen) • Up to 2 additional control circuits possible • Fuel-efficient pump control • Proportional, independent control of all movements • Primary and secondary protection against overload 	<ul style="list-style-type: none"> • Pump flow control • Prefill valves for all work functions • Load-hold and fine-drop valve in lifting circuit • Max. discharge flow 480 l/min • Max. operating pressure 340 (370)*bar
Operating modes:	
3 pre-programmed modes (Fine, Eco, Power)	

PIVOTING ASSEMBLY

<ul style="list-style-type: none"> • Oscillating motor: Axial piston motor with priority valve • Pivoting transmission: Multistage planetary gear • Pivoting brakes: Automatic multidisc parking brake 	<ul style="list-style-type: none"> • Can also be operated manually • Max. upper wagon RPM 10.5/min • Oscillating torque 88.10 (95,88)*kNm
---	--

TRACTION DRIVE AND BRAKES

<ul style="list-style-type: none"> • Steering: 2 control levers / pedals enable separate drive of both chains • Traction drive: 2 automatic drive positions • Brakes: Hydraulic, service-free multidisc brakes 	<ul style="list-style-type: none"> • Maximum speed 3.3 /5.8 km/h • Tractive force 1240*kN • Max. climbing power 70%
---	--

LOWER WAGON

Construction:	Drives:	
<ul style="list-style-type: none"> • Model X • Lifetime lubrication of track and carrier rollers • 4 lashing grommets 	<ul style="list-style-type: none"> • Drive quality B4HD • Three-section base plates • Chains lubricated • Sealed bolts 	<ul style="list-style-type: none"> • Chain tension via hydraulic oil cylinder and pre-tensioned steel spring • Wheel base LC 2.40 m • Wheel base NLC 2.20 m

FILL LEVELS

Fuel tank 389 l	Engine oil 20 l
Cooling system 42 l	Hydraulic tank volume 216 l

DRIVER CAB

CAB	STEERING	CLIMATE CONTROL
<ul style="list-style-type: none"> • Extra-wide entrance • Left arm console can be folded up • Spacious leg room • Excellent all-around view • Preparation for radio installation 	<ul style="list-style-type: none"> • Ergonomically designed pilot lever • Clear and concise arrangement of the switches in the control panel 	<ul style="list-style-type: none"> • Air conditioner standard in all models • Very good air distribution through optimally arranged nozzles
	MONITORING	
DRIVER'S SEAT	<ul style="list-style-type: none"> • Operating data appears in a display • Automatic monitoring, warning and saving 	<ul style="list-style-type: none"> ISO 6396 (LpA) in driver cab 72 dB(A) 2000/14EG (LwA) based on outside level 103 dB(A)
<ul style="list-style-type: none"> • Comfort seat, air-suspended • Arm rests and lumbar support • Can be adjusted separately from the console 		

* Values when pressure is switched on

Equipment

OPERATING WEIGHTS

Monoblock	
Ground plate width	500mm
Ground plate width	600mm
Ground plate width	700mm
Ground plate width	800mm

Crawler Excavator TC 240 LC

Monoblock 5,95 m (C25.3M) Bending arm 2,50 m (D25.2)	Monoblock 6,95 m (C25.5M) Bending arm 3,20 m (D25.3)
-	-
24,0 t	24,5 t
24,4 t	24,8 t
24,7 t	25,1 t

Crawler Excavator TC 240 NLC

Monoblock 5,95 m (C25.3M) Bending arm 2,50 m (D25.2)	Monoblock 6,95 m (C25.5M) Bending arm 3,20 m (D25.3)
-	-
23,8 t	24,2 t
21,1 t	24,5 t
24,4 t	24,9 t

OPERATING WEIGHTS

Adjustable main arm 1,95 m (C25.41) Adjustable boom 4,23 m (C25.46)	
Ground plate width	500mm
Ground plate width	600mm
Ground plate width	700mm
Ground plate width	800mm

Crawler Excavator TC 240 LC

Bending arm 2,15 m (D21.23)	Bending arm 2,65 m (D21.33)
-	-
24,3 t	24,3 t
24,6 t	24,6 t
24,9 t	24,9 t

Crawler Excavator TC 240 NLC

Bending arm 2,15 m (D21.23)	Bending arm 2,65 m (D21.33)
-	-
24,1 t	24,1 t
24,4 t	24,4 t
24,7 t	24,7 t

Operating weight with driver, completely filled implement and 1,0 t for attachments

STANDARD EQUIPMENT

Engine:	<ul style="list-style-type: none"> • Cylinder end-stop damping • Accumulator for emergency lowering of the arm system 	Equipment:
<ul style="list-style-type: none"> • COM III exhaust level • 6 cylinders • RPM / potentiometer • Automatic idle • Diesel pre-filter • Engine monitoring 		<ul style="list-style-type: none"> • Consolidated lubrication points for rotating assembly and arm equipment
Hydraulics:	Cab:	Lower wagon
<ul style="list-style-type: none"> • Maximum-load-controlled double displacement pump • Hydraulischer Anbausatz für Greifen (ohne Drehen) • Hammerhydraulik (max.200 Liter) • Scherenhydraulik (max.200 Liter) • Pipe rupture valve for lifting cylinder • Pressure control level 	<ul style="list-style-type: none"> • Air conditioner • Radio preparation • Air-suspended comfort seat • Seat can be moved separately from control panel • Left arm console can be folded up • Heat-insulating glass, tinted windows • Operating data appears in a display 	<ul style="list-style-type: none"> • X frame with complex box-profile construction • Integrated, hydraulic traction drive with brake valve • Automatic, hydraulic, service-free multi-disc brakes • Chain tensioning can be adjusted via oil cylinder • Lubricated, sealed chains • 4 lashing grommets on the lower wagon
	Upper wagon, other:	
	<ul style="list-style-type: none"> • Tool box 	

SPECIAL EQUIPMENT

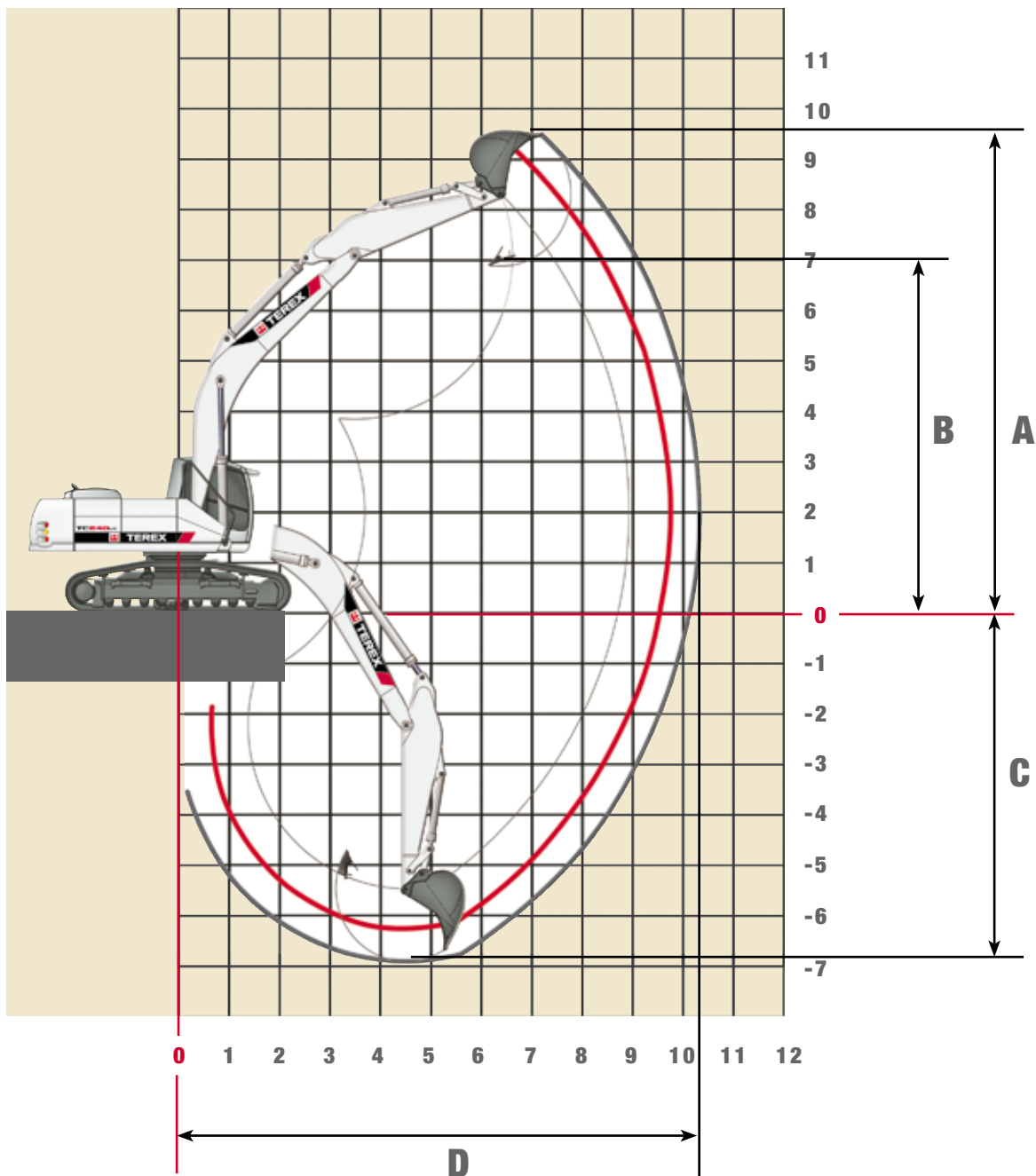
Monoblock:	Engine:	Equipment:
<ul style="list-style-type: none"> • Monoblock with bending cylinder 5,95m (C25.3M) • Monoblock with bending cylinder 6,95m (C25.5M) 	<ul style="list-style-type: none"> • Fuel pump • Supplementary heating system • Cold startup assistance 	<ul style="list-style-type: none"> • Electrical central lubrication system
Bending arms for Monoblock:	Hydraulics:	Cab:
<ul style="list-style-type: none"> • Bending arm 2,50 m (D25.2) • Bending arm 3,20 m (D25.3) 	<ul style="list-style-type: none"> • Scissors / sorting gripper function with comfort pressure controller • Gripper / gripper rotating function • Up to two additional circuits • Floating function for the boom • Hydraulic quick switch device • Pipe rupture valve for bending cylinder • Pipe rupture valve for scoop tipping cylinder • Bio oil 	<ul style="list-style-type: none"> • Rock protection guard • Flood lights • 360° lighting • Radio • Heated driver's seat
Adjustable booms:		Other special equipment: See price list
<ul style="list-style-type: none"> • Adjustable main arm 1,95 m (C25.41) • Adjustable boom with bending cylinder 4,23 m (C25.46) 		
Bending arms for adjustable booms:		
<ul style="list-style-type: none"> • Bending arm 2.15 m (D21.23) • Bending arm 2.65 m (D21.33) 		

ATTACHMENTS

Content SAE	0,48 m ³	0,93 m ³	1,17 m ³	1,53 m ³	1,65 m ³
Cutting width	600 mm	1000 mm	1200 mm	1500 mm	1600 mm
Weight	620 kg	730 kg	830 kg	990 kg	1070 kg
reach NLC (m)	9,0	8,5	7,5	6,5	6,0
reach LC (m)	9,0	9,0	8,0	6,5	6,5

stability acc. to ISO 10567, bulk weight 1.8 t/m³

Work Areas Monoblock 5,95 m (C 25.3M)



BENDING ARM LENGTHS	2,50m (D25.2)	3,20m (D25.3)
A Max. cut-in height	9,10 m	9,36 m
B Max. pouring height	6,50 m	6,77 m
C Max. trench depth	6,13 m	6,83 m
D Max. reach	9,92 m	10,55 m
Max. breakaway torque	168* kN	168* kN
Max. breakout force	161* kN	136* kN

Lifting capacities Monoblock 5,95 m (C 25.3M)

TC 240 LC Lifting capacity at 370 bar

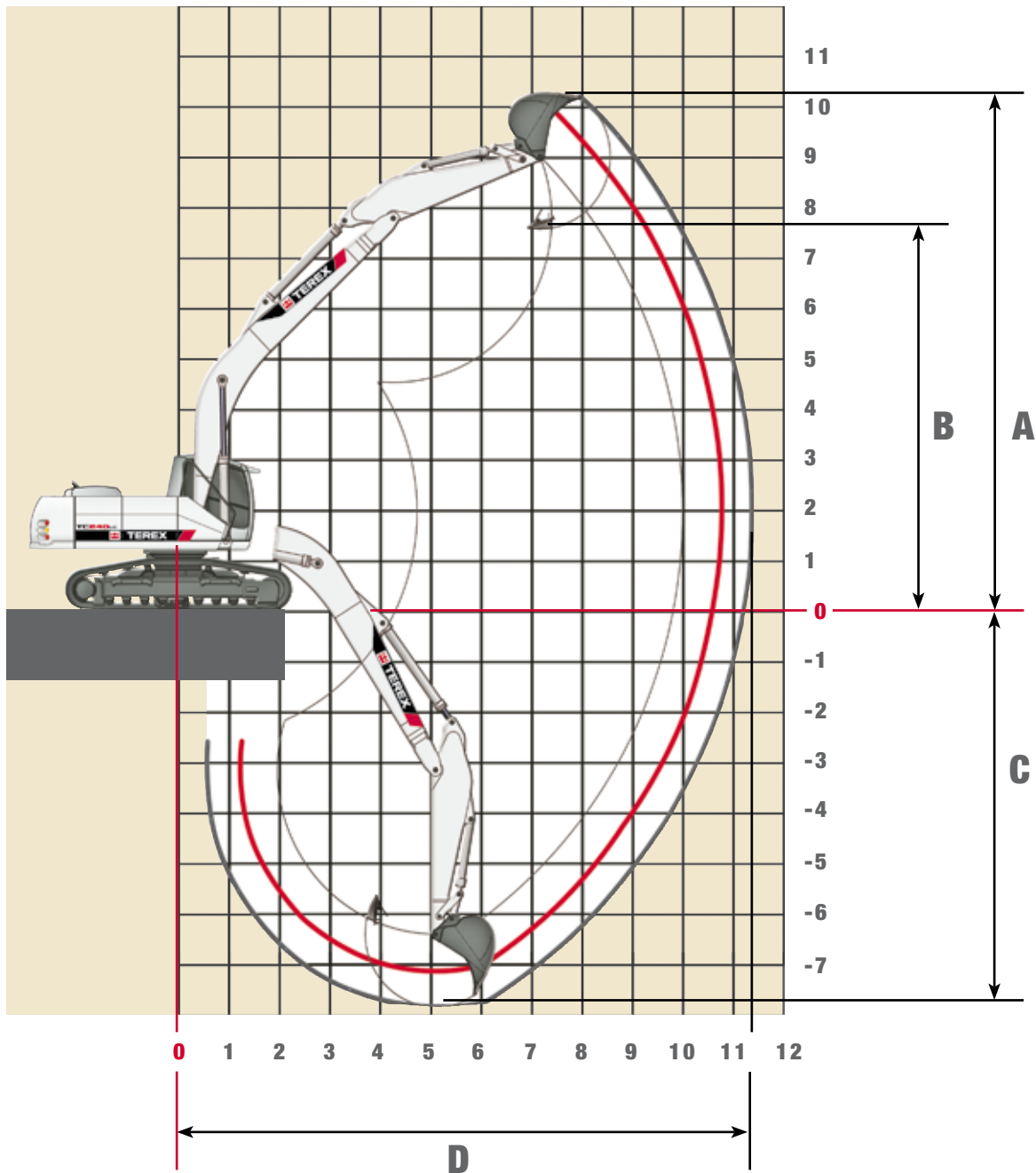
HEIGHT	3,0 m		4,5 m		6,0 m		7,5 m		9,0 m	
	FRONT	LATERAL	FRONT	LATERAL	FRONT	LATERAL	FRONT	LATERAL	FRONT	LATERAL
Monoblock 5,95 m (C 25.3M) with bending arm 2,50 m (D 25.2) Max. reach 9.92 m										
+9,0 m										
+7,5 m										
+6,0 m					9488	5906				
+4,5 m			13427*	8601	9212	5668	6487	4075		
+3,0 m			13959	7848	8846	5354	6332	3936		
+1,5 m			13308	7329	8524	5076	6174	3795		
0 m			13104	7166	8330	4908	6066	3698		
-1,5 m	15061*	13859	10182	7228	8311	4893	6084	3714		
-3,0 m	22419*	41098	13398	7401	8447	50100				
-4,5 m			12605*	7738						
Monoblock 5,95 m (C 25.3M) with bending arm 3,20 m (D 25.3) Max. reach 10.55 m										
+9,0 m										
+7,5 m										
+6,0 m							6693	4246		
+4,5 m					9364	5782	6566	4132		
+3,0 m			14259	8062	8942	5418	6367	3954	4825	3007
+1,5 m			13386	7365	8539	5071	6164	3772	4737	2927
0 m			12953	7019	8262	4832	6008	3633		
-1,5 m			12888	6967	8149	4735	5950	3581		
-3,0 m	22054*	13469	13049	7069	8226	4802	6043	3554		
-4,5 m	20384*	13458	13397	7373	8485	5025				

TC 240 NLC Lifting capacity at 370 bar

HEIGHT	3,0 m		4,5 m		6,0 m		7,5 m		9,0 m	
	FRONT	LATERAL	FRONT	LATERAL	FRONT	LATERAL	FRONT	LATERAL	FRONT	LATERAL
Monoblock 5,95 m (C 25.3M) with bending arm 2,50 m (D 25.2) Max. reach 9.92 m										
+9,0 m										
+7,5 m										
+6,0 m					9407	5411				
+4,5 m			13427*	7808	9130	5178	6427	3724		
+3,0 m			13831	7078	8765	4870	6272	3588		
+1,5 m			13181	6574	8442	4598	6114	3449		
0 m			12976	6415	8248	4434	6006	3354		
-1,5 m	15061*	12163	13055	6476	8230	4418	6024	3370		
-3,0 m	22419*	12391	13271	6646	8366	4533				
-4,5 m			12605*	6970						
Monoblock 5,95 m (C 25.3M) with bending arm 3,20 m (D 25.3) Max. reach 10.55 m										
+9,0 m										
+7,5 m										
+6,0 m							6633	3891		
+4,5 m					9283	5287	6506	3779		
+3,0 m			14131	7281	8860	4930	6308	3604	4778	2736
+1,5 m			13258	6605	8457	4590	6104	3424	4690	2656
0 m			12825	6269	8180	4357	5948	3287		
-1,5 m			12760	6219	8068	4261	5890	3236		
-3,0 m	22054*	11787	12922	6344	8145	4327	5983	3318		
-4,5 m	20384*	12251	13269	6613	8404	4545				

The specified max. loading capacities in kilogram include a stability of 33% or are calculated at 87% of the hydraulic lifting power, as per ISO10567. These values are applicable at the tip of the arm with optimum positioning of the corresponding arm system and with the pressure switched on. * Value limited due to hydraulics.

Work Areas Monoblock 6,95 m (C 25.5M)



BENDING ARM LENGTHS	2,50m (D25.2)	3,20m (D25.3)
A Max. cut-in height	9,81 m	10,08 m
B Max. pouring height	7,21 m	7,48 m
C Max. trench depth	6,99 m	7,69 m
D Max. reach	10,94 m	11,58 m
Max. breakaway torque	168* kN	168* kN
Max. breakout force	161* kN	136* kN

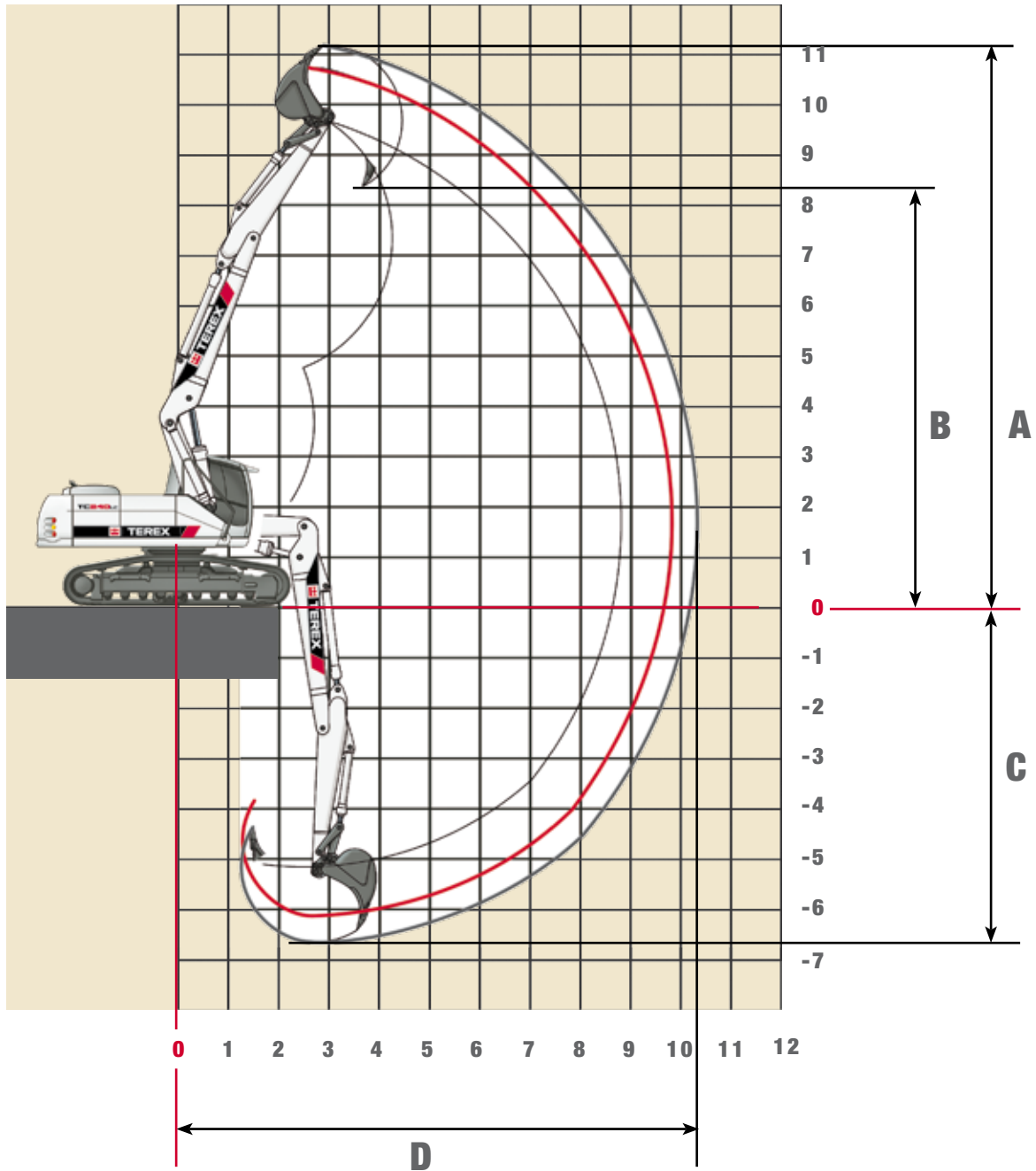
Lifting capacities Monoblock 6,95 m (C 25.5M)

TC 240 LC Lifting capacity at 370 bar

HEIGHT	3,0 m		4,5 m		6,0 m		7,5 m		9,0 m	
	FRONT	LATERAL	FRONT	LATERAL	FRONT	LATERAL	FRONT	LATERAL	FRONT	LATERAL
Monoblock 6,95 m (C 25.5M) with bending arm 2,50 m (D 25.2) Max. reach 10,94 m										
+9,0 m										
+7,5 m							6625	4179		
+6,0 m							6563	4124		
+4,5 m					8940	5409	6373	3954	4812	2991
+3,0 m					8466	5001	6144	3749	4715	2903
+1,5 m					8117	4700	5944	3570	4613	2810
0 m					7945	4552	5813	3453	4544	2746
-1,5 m			12723	6825	7942	4550	5783	3427		
-3,0 m	16875*	13615	12897	6964	8047	4640	5867	3501		
-4,5 m			13203	7208	8275	4836				
Monoblock 6,95 m (C 25.5M) with bending arm 3,20 m (D 25.3) Max. reach 11,58 m										
+9,0 m										
+7,5 m										
+6,0 m										
+4,5 m							6661	4198	4941	3098
+3,0 m					3091	5522	6435	3996	4852	3017
+1,5 m					8552	5057	6165	3755	4717	2893
0 m					8105	4672	5916	3532	4580	2768
-1,5 m			10619*	6425	7839	4443	5737	3372	4476	2673
-3,0 m			12317	6475	7747	4364	5648	3292	4439	2639
-4,5 m			12485	6610	7813	4420	5688	3328		

TC 240 NLC Lifting capacity at 370 bar

HEIGHT	3,0 m		4,5 m		6,0 m		7,5 m		9,0 m	
	FRONT	LATERAL	FRONT	LATERAL	FRONT	LATERAL	FRONT	LATERAL	FRONT	LATERAL
Monoblock 6,95 m (C 25.5M) with bending arm 2,50 m (D 25.2) Max. reach 10,94 m										
+9,0 m										
+7,5 m							6565	3824		
+6,0 m							6503	3770		
+4,5 m					8859	4921	6313	3602	4765	2719
+3,0 m					9385	4521	6084	3401	4668	2632
+1,5 m					8035	4226	5884	3225	4566	2540
0 m					7864	4081	5753	3109	4497	2477
-1,5 m			12595	3079	7861	4079	5724	3083		
-3,0 m	16875*	11923	12769	6214	7966	4168	5807	3157		
-4,5 m			13075	6451	8193	4359				
Monoblock 6,95 m (C 25.5M) with bending arm 3,20 m (D 25.3) Max. reach 11,58 m										
+9,0 m										
+7,5 m										
+6,0 m										
+4,5 m							6602	3841	4894	2923
+3,0 m					9010	5028	6376	3642	4805	2743
+1,5 m					8470	4573	6105	3404	4670	2620
0 m					8023	4196	5857	3185	4533	2497
-1,5 m			10619*	5688	7758	9072	5678	3027	4429	2403
-3,0 m			12190	5736	7665	3894	5588	2949	4392	2370
-4,5 m			12358	5866	7731	3950	5629	2985		

Work Areas Adjustable Boom 1,95 m (C 25.41) and 4,23 m (C25.46)


BENDING ARM LENGTHS	2.15m (D21.23)	2.65m (D21.33)
A Max. cut-in height	10,68 m	11,10 m
B Max. pouring height	8,01 m	8,43 m
C Max. trench depth	6,28 m	6,67 m
D Max. reach	9,79 m	10,26 m
Max. breakaway torque	170 (185)* kN	170 (185)* kN
Max. breakout force	138 (150)* kN	120 (131)* kN

Lifting capacities Adjustable Boom 1,95 m (C 25.41) and 4,23 m (C25.46)

TC 240 LC

Lifting capacity at 360 bar

HEIGHT	3.0 m		4.5 m		6.0 m		7.5 m		9.0 m	
	FRONT	LATERAL	FRONT	LATERAL	FRONT	LATERAL	FRONT	LATERAL	FRONT	LATERAL
Adjustable boom 1.95 m (C 25.41) and 4,23 m (C25.46) with bending arm 2.15 m (D 21.23) Max. reach 9,79 m										
+8.0 m			7875*	7875*						
+7.0 m			7603*	7603*	7236*	5998				
+6.0 m			8088*	8088*	7149*	6069				
+5.0 m	10211*	10211*	9151*	8961	7396*	6037	6546*	4249		
+4.0 m			10156*	8804	7813*	5983	6653	4280		
+3.0 m			11508*	8689	8362*	5946	6641	4275		
+2.0 m	10253*	10253*	12558*	8623	8968*	5923	6617	4239		
+1.0 m	14424*	14424*	13689*	8621	8989	5949	6551	4178		
0 m	18056*	15886	13909	8676*	9030	5890	6470	4102		
-1.0 m	21571*	15771	13998	8585	9186	5713	6390	4031		
-2.0 m	23424*	15644	14161	8481	9006	5547	6367	4010		
-3.0 m	23701*	15631	14453	8325	8904	5459				
-4.0 m	23588*	15614	13539*	8208						
Adjustable boom 1.95 m (C 25.41) and 4,23 m (C25.46) with bending arm 2.65 m (D 21.33) Max. reach 10,26 m										
+8.0 m			6876*	6876*	6514*	5992				
+7.0 m			6772*	6772*	6660*	6128				
+6.0 m			7270*	7270*	6763*	6116	6120*	4320		
+5.0 m	9881*	9881*	8318*	8318*	7053*	6063	6275*	4382		
+4.0 m			9531*	8862	7471*	5999	6447*	4405		
+3.0 m			10760*	8713	8010*	5942	6628	4396		
+2.0 m	11214*	11214*	12177*	8616	8615*	5906	6608	4356		
+1.0 m	14088*	14088*	13553*	8596	8964	5901	6626	4285		
0 m	16960*	15750	13832*	8623	8975	5946	6564	4194		
-1.0 m	20184*	15859	13900	8635	9046	5832	6463	4101		
-2.0 m	22790*	15667	14031	8498	9118	5657	6383	4027		
-3.0 m	23456*	15588	14274	8437	8948	5494				
-4.0 m	24076*	15682	14347	8235	8896	5449				

TC 240 NLC

Lifting capacity at 360 bar

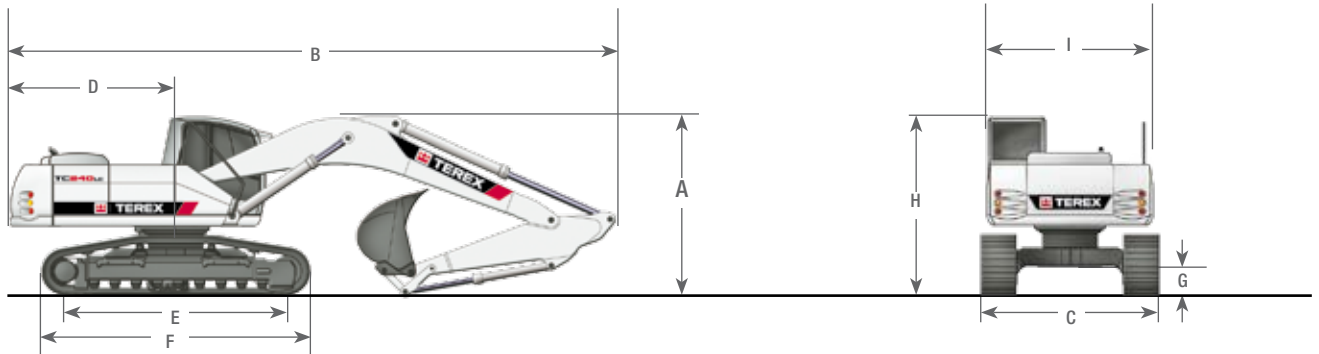
HEIGHT	3.0 m		4.5 m		6.0 m		7.5 m		9.0 m	
	FRONT	LATERAL	FRONT	LATERAL	FRONT	LATERAL	FRONT	LATERAL	FRONT	LATERAL
Adjustable boom 1.95 m (C 25.41) and 4,23 m (C25.46) with bending arm 2.15 m (D 21.23) Max. reach 9,79 m										
+8.0 m			7875*	7875*						
+7.0 m			7603*	7603*	7236*	5509				
+6.0 m	9031*	9031*	8088*	8088*	7149*	5608				
+5.0 m	11209*	11209*	9151*	8240	7396*	5580	6546*	3903		
+4.0 m	9543*	9543*	10156*	8088	7813*	5537	6599	3933	5904	3501
+3.0 m	9627*	9627*	11508*	7990	8362*	5502	6590	3928	5906	3503
+2.0 m	12055*	11212*	12558*	7922*	8931	5484	6557	3892	5880	3479
+1.0 m	14693*	11218	13689*	7923	8925	5519	6492	3833	5831	3435
0 m	17097*	11303	13808	7968	8963	5403	6410	3758	5774	3384
-1.0 m	19025*	11089	13905	7805	9105	5230	6330	3687		
-2.0 m	19393*	10967	14075	7703	8924	5068	6307	3667		
-3.0 m	19648*	10947	14325	7552	8822	4982				
-4.0 m	19313*	10818	13539*	7439						
Adjustable boom 1.95 m (C 25.41) and 4,23 m (C25.46) with bending arm 2.65 m (D 21.33) Max. reach 10,26 m										
+8.0 m			6876*	6876*	6514*	5503				
+7.0 m			6772*	6772*	6660*	5660*				
+6.0 m			7270*	7270*	6763*	5653	6120*	3972		
+5.0 m	9711*	9711*	8318*	8308	7053*	5612	6275*	4033	5919*	3589
+4.0 m	10437*	10437*	9531*	8148	7471*	5551	6447*	4056	6029	3616
+3.0 m	10416*	10416*	10760*	8001	8010*	5502	6574	4047	6020	3610
+2.0 m	12547*	11188	12177*	7916	8615*	5466	6558	4008	5984	3577
+1.0 m	14373*	11180	13553*	7889	8892	5462*	6578	3938	5924	3523
0 m	16330*	11227	13739	7909	8910	5458	6505	3848	5850	3455
-1.0 m	18373*	11157	13809	7853	8979	5346	6403	3756	5779	3386
-2.0 m	19232*	10989	13941*	7720	9036	5175	6323	3683	5747	3357
-3.0 m	19436*	10912	14199	7660	8867	5015				
-4.0 m	19974*	10881	14220	7464	8815	4971				

The specified max. loading capacities in kilogrammes include a stability of 33% or are calculated at 87% of the hydraulic lifting power, as per ISO10567.

These values are applicable at the tip of the arm with optimum positioning of the corresponding arm system and when the pressure is switched on. *Value limited due to hydraulics.

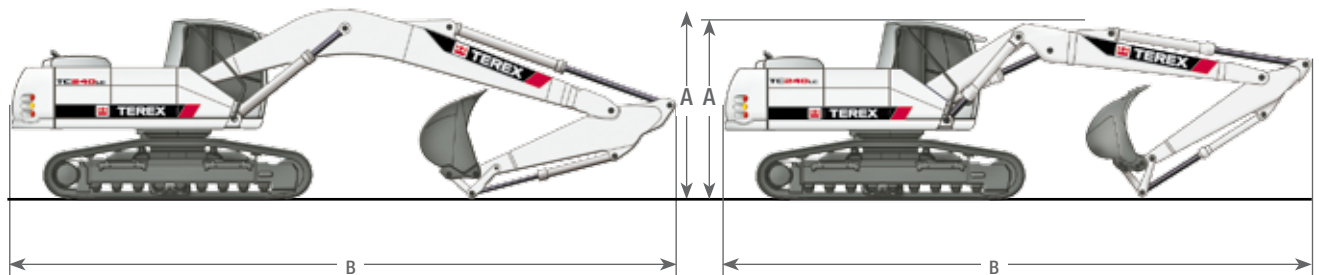
Dimensions

Monoblock 5,95 m (C25.3M)



Monoblock 6,95 m (C25.5M)

Adjustable boom 1,95m (C25.41) und 4,23m (C25.46)



A TRANSPORT HEIGHT		B TRANSPORT LENGTHS	
Monoblock 5.95 m (C25.3M) with bending arm 2.50 m (D25.2)	3,05 m	Monoblock 5.95 m (C25.3M) with bending arm 2.50 m (D25.2)	10,12 m
Monoblock 5.95 m (C25.3M) with bending arm 3.20 m (D25.3)	3,35 m	Monoblock 5.95 m (C25.3M) with bending arm 3.20 m (D25.3)	10,15 m
Monoblock 6.95 m (C25.5M) with bending arm 2.50 m (D25.2)	3,20 m	Monoblock 6.95 m (C25.5M) with bending arm 2.50 m (D25.2)	11,14 m
Monoblock 6.95 m (C25.5M) with bending arm 3.20 m (D25.3)	3,35 m	Monoblock 6.95 m (C25.5M) with bending arm 3.20 m (D25.3)	11,15 m
Adjustable boom, 1.95 m (C25.41) and 4.23 m (C25.46)		Adjustable boom, 1.95 m (C25.41) and 4.23 m (C25.46)	
with bending arm 2.15 m (D21.23)	3,15 m	with bending arm 2.15 m (D21.23)	9,88 m
with bending arm 2.65 m (D21.33)	3,15 m	with bending arm 2.65 m (D21.33)	9,93 m
C TRANSPORT WIDTHS		D REAR PIVOTING RADIUS	
	SPUR LC	TRACK NLC	2,80 m
Ground plate width 500 mm	2,40 m	2,20 m	E SUPPORTING CHAIN LENGTH
Ground plate width 600 mm	3,00 m	2,80 m	3,70 m
Ground plate width 700 mm	3,10 m	2,90 m	F DRIVE LENGTH
Ground plate width 800 mm	3,20 m	3,00 m	4,53 m
			G GROUND CLEARANCE
			0,44 m
			H HEIGHT ABOVE CAB
			3,01 m
			I UPPER WAGON TRANSPORT WIDTH
			2,80 m

We reserve the right to make structural changes, data is informational only, units comply with the new European safety guidelines.



TEREX Atlas
 Atlasstr. 6
 27777 Ganderkesee
 Deutschland
 Tel. +49 (0) 4222 / 954-0
 Fax: +49 (0) 4222 / 954-343

www.terex.de
 E-Mail: info@terex-atlas.de