






## Crawler Excavator | TC 260 LC, TC 260 NLC



-  max. 26,6 t
-  125 kW (168 hp)
-  0,48 - 1,87 m<sup>3</sup>



# CRAWLER EXCAVATOR TC260

## Technical Information

### ENGINE

|   |   |                              |
|---|---|------------------------------|
| COM III exhaust level                           | Cylinder capacity ..... 6,700 cm <sup>3</sup> | Battery ..... 2x 12 V/100 Ah |
| Power according to ISO 9249..... 125kW (168 HP) | Number of cylinders ..... 6                   | Alternator..... 24 V/70 Ah   |
| RPM ..... 2000/min                              | Automatic idle ..... Standard                 | Starter..... 24 V/3.2 kW     |
| Make/model..... Cummins QSB 6.7                 | Cooling system ..... Water-cooled             |                              |
| Design..... Turbocharger/LLK                    | Air filter ..... Dry air filter               |                              |

### HYDRAULICS SYSTEM

|  |  |
|--|--|
| <ul style="list-style-type: none"> <li>• 2 maximum-load-controlled high-performance piston pumps</li> <li>• Dual-circuit hydraulics system</li> <li>• 7 standard consumer loads in one control block</li> <li>• Hydraulischer Anbausatz für Greifen serienmäßig (ohne Drehen)</li> <li>• Up to 2 additional control circuits possible</li> <li>• Fuel-efficient pump control</li> <li>• Proportional, independent control of all movements</li> <li>• Primary and secondary protection against overload</li> </ul> | <ul style="list-style-type: none"> <li>• Pump flow control</li> <li>• Prefill valves for all work functions</li> <li>• Load-hold and fine-drop valve in lifting circuit</li> <li>• Max. discharge flow ..... 480 l/min</li> <li>• Max. operating pressure ..... 340 (370)*bar</li> </ul> |
| <b>Operating modes:</b>  |  |
| 3 pre-programmed modes (Fine, Eco, Power)  |  |

### PIVOTING ASSEMBLY

|   |  |
|---|--|
| <ul style="list-style-type: none"> <li>• Oscillating motor: ..... Axial piston motor with priority valve</li> <li>• Pivoting transmission: ..... Multistage planetary gear</li> <li>• Pivoting brakes: ..... Automatic multidisc parking brake</li> </ul> | <ul style="list-style-type: none"> <li>• Can also be operated manually</li> <li>• Max. upper wagon RPM ..... 10.5/min</li> <li>• Oscillating torque ..... 88.10 (95,88)*kNm</li> </ul> |
|---|--|

### TRACTION DRIVE AND BRAKES

|   |  |
|---|--|
| <ul style="list-style-type: none"> <li>• Steering: 2 control levers / pedals enable separate drive of both chains</li> <li>• Traction drive: 2 automatic drive positions</li> <li>• Brakes: Hydraulic, service-free multidisc brakes</li> </ul> | <ul style="list-style-type: none"> <li>• Maximum speed ..... 3.3 /5.8 km/h</li> <li>• Tractive force ..... 1240*kN</li> <li>• Max. climbing power ..... 70%</li> </ul> |
|---|--|

### LOWER WAGON

|  |  |  |
|--|--|--|
| <b>Construction:</b>   | <b>Drives:</b>   |  |
| <ul style="list-style-type: none"> <li>• Model X</li> <li>• Lifetime lubrication of track and carrier rollers</li> <li>• 4 lashing grommets</li> </ul> | <ul style="list-style-type: none"> <li>• Drive quality B4HD</li> <li>• Three-section base plates</li> <li>• Chains lubricated</li> <li>• Sealed bolts</li> </ul> | <ul style="list-style-type: none"> <li>• Chain tension via hydraulic oil cylinder and pre-tensioned steel spring</li> <li>• Wheel base LC ..... 2.40 m</li> <li>• Wheel base NLC ..... 2.20 m</li> </ul> |

### FILL LEVELS

|                           |                                   |
|---------------------------|-----------------------------------|
| Fuel tank ..... 389 l     | Engine oil ..... 20 l             |
| Cooling system ..... 42 l | Hydraulic tank volume ..... 216 l |

### DRIVER CAB

|  |  |   |
|--|--|---|
| <b>CAB</b>   | <b>STEERING</b>  | <b>CLIMATE CONTROL</b>  |
| <ul style="list-style-type: none"> <li>• Extra-wide entrance</li> <li>• Left arm console can be folded up</li> <li>• Spacious leg room</li> <li>• Excellent all-around view</li> <li>• Preparation for radio installation</li> </ul> | <ul style="list-style-type: none"> <li>• Ergonomically designed pilot lever</li> <li>• Clear and concise arrangement of the switches in the control panel</li> </ul> | <ul style="list-style-type: none"> <li>• Air conditioner standard in all models</li> <li>• Very good air distribution through optimally arranged nozzles</li> </ul> |
|  | <b>MONITORING</b>  |   |
| <b>DRIVER'S SEAT</b>   | <ul style="list-style-type: none"> <li>• Operating data appears in a display</li> <li>• Automatic monitoring, warning and saving</li> </ul>                          | <ul style="list-style-type: none"> <li>ISO 6396 (LpA) in driver cab ..... 72 dB(A)</li> <li>2000/14EG (LwA) based on outside level ..... 103 dB(A)</li> </ul>       |
| <ul style="list-style-type: none"> <li>• Comfort seat, air-suspended</li> <li>• Arm rests and lumbar support</li> <li>• Can be adjusted separately from the console</li> </ul>   |  |   |

\* Values when pressure is switched on

## Equipment

### OPERATING WEIGHTS

| Monoblock                |
|--------------------------|
| Ground plate width 500mm |
| Ground plate width 600mm |
| Ground plate width 700mm |
| Ground plate width 800mm |

| Crawler Excavator TC 260 LC                             |   |   |
|---|---|---|
| Monoblock 5,95 m (C25.3M)<br>Bending arm 2,50 m (D25.2) |   | Monoblock 6,95 m (C25.5M)<br>Bending arm 3,20 m (D25.3) |
| -   | - | -   |
| 25,4 t  |   | 25,8 t  |
| 25,7 t  |   | 26,1 t  |
| 26,0 t  |   | 26,5 t  |

### OPERATING WEIGHTS

| Adjustable main arm   Adjustable boom |
|---------------------------------------|
| Ground plate width 500mm              |
| Ground plate width 600mm              |
| Ground plate width 700mm              |
| Ground plate width 800mm              |

| Crawler Excavator TC 260 LC                                     |   |   |
|---|---|---|
| 1,95 m (C25.41)   4,23m (C25.46)<br>Bending arm 2,15 m (D21.23) |   | 1,95 m (C25.41)   4,23m (C25.46)<br>Bending arm 2,65 m (D21.33) |
| -   | - | -   |
| 25,7 t  |   | 25,7 t  |
| 26,0 t  |   | 26,0 t  |
| 26,3 t  |   | 26,3 t  |

Operating weight with driver, completely filled implement and 1,0 t for attachments

### STANDARD EQUIPMENT

|   |  |   |
|---|--|---|
| <b>Engine:</b>  | <ul style="list-style-type: none"> <li>• Cylinder end-stop damping</li> <li>• Accumulator for emergency lowering of the arm system</li> </ul>  | <b>Equipment:</b>   |
| <ul style="list-style-type: none"> <li>• COM III exhaust level</li> <li>• 6 cylinders</li> <li>• RPM / potentiometer</li> <li>• Automatic idle</li> <li>• Diesel pre-filter</li> <li>• Engine monitoring</li> </ul>   |  | <ul style="list-style-type: none"> <li>• Consolidated lubrication points for rotating assembly and arm equipment</li> </ul>   |
| <b>Hydraulics:</b>  | <b>Cab:</b>  | <b>Lower wagon</b>  |
| <ul style="list-style-type: none"> <li>• Maximum-load-controlled double displacement pump</li> <li>• Hydraulischer Anbausatz für Greifen (ohne Drehen)</li> <li>• Hammerhydraulik (max.200 Liter)</li> <li>• Scherenhydraulik (max.200 Liter)</li> <li>• Pipe rupture valve for lifting cylinder</li> <li>• Pressure control level</li> </ul> | <ul style="list-style-type: none"> <li>• Air conditioner</li> <li>• Radio preparation</li> <li>• Air-suspended comfort seat</li> <li>• Seat can be moved separately from control panel</li> <li>• Left arm console can be folded up</li> <li>• Heat-insulating glass, tinted windows</li> <li>• Operating data appears in a display</li> </ul> | <ul style="list-style-type: none"> <li>• X frame with complex box-profile construction</li> <li>• Integrated, hydraulic traction drive with brake valve</li> <li>• Automatic, hydraulic, service-free multi-disc brakes</li> <li>• Chain tensioning can be adjusted via oil cylinder</li> <li>• Lubricated, sealed chains</li> <li>• 4 lashing grommets on the lower wagon</li> </ul> |
|   | <b>Upper wagon, other:</b>   |   |
|   | <ul style="list-style-type: none"> <li>• Tool box</li> </ul>   |   |

### SPECIAL EQUIPMENT

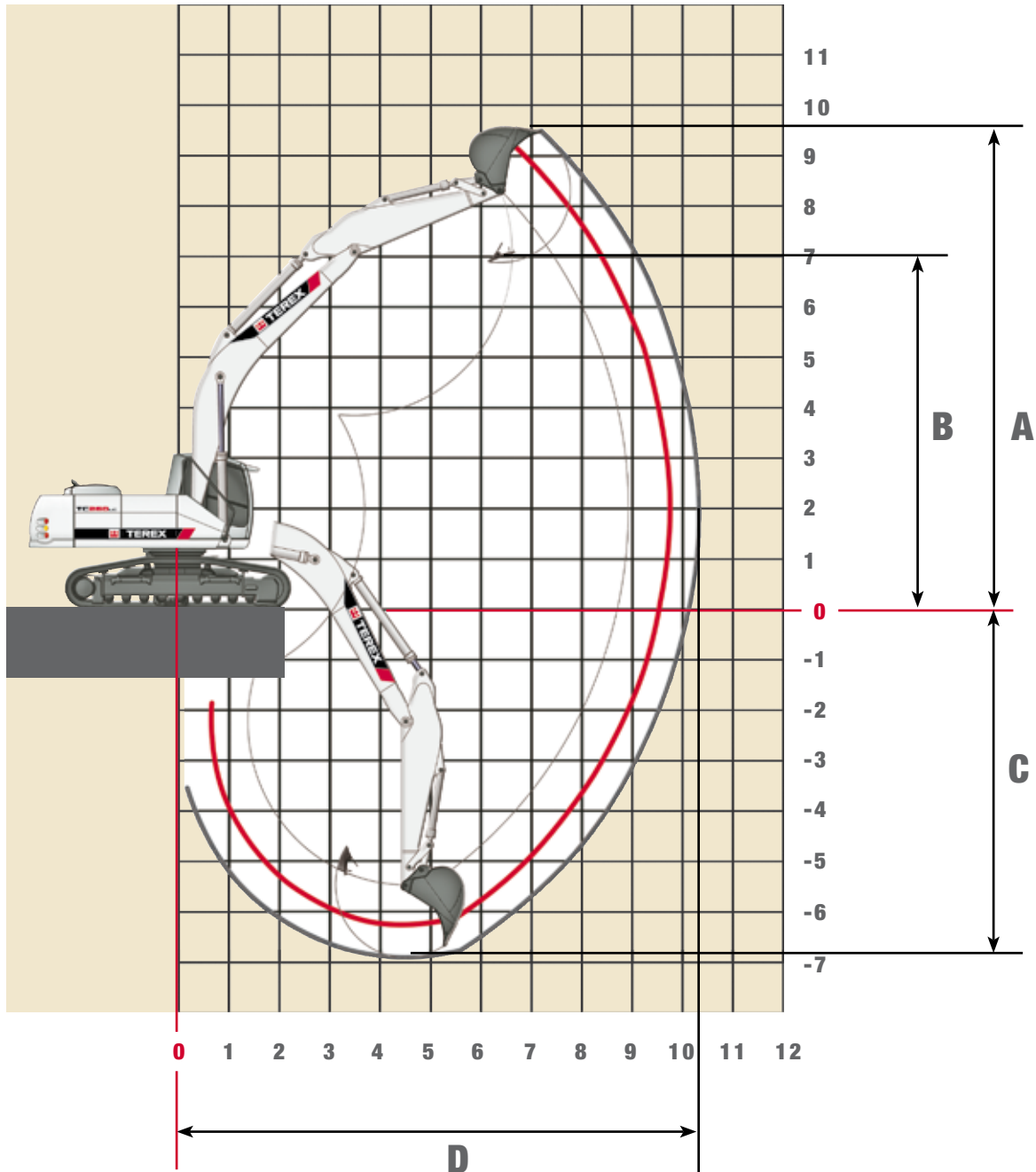
|  |  |   |
|--|--|---|
| <b>Monoblock:</b>  | <b>Engine:</b>   | <b>Equipment:</b>   |
| <ul style="list-style-type: none"> <li>• Monoblock with bending cylinder 5,95m (C25.3M)</li> <li>• Monoblock with bending cylinder 6,95m (C25.5M)</li> </ul> | <ul style="list-style-type: none"> <li>• Fuel pump</li> <li>• Supplementary heating system</li> <li>• Cold startup assistance</li> </ul>   | <ul style="list-style-type: none"> <li>• Electrical central lubrication system</li> </ul>   |
| <b>Bending arms for Monoblock:</b>   | <b>Hydraulics:</b>   | <b>Cab:</b>   |
| <ul style="list-style-type: none"> <li>• Bending arm 2,50 m (D25.2)</li> <li>• Bending arm 3,20 m (D25.3)</li> </ul>   | <ul style="list-style-type: none"> <li>• Scissors / sorting gripper function with comfort pressure controller</li> <li>• Gripper / gripper rotating function</li> <li>• Up to two additional circuits</li> <li>• Floating function for the boom</li> <li>• Hydraulic quick switch device</li> <li>• Pipe rupture valve for bending cylinder</li> <li>• Pipe rupture valve for scoop tipping cylinder</li> <li>• Bio oil</li> </ul> | <ul style="list-style-type: none"> <li>• Rock protection guard</li> <li>• Flood lights</li> <li>• 360° lighting</li> <li>• Radio</li> <li>• Heated driver's seat</li> </ul> |
| <b>Adjustable booms:</b>   |  | <b>Other special equipment:</b> See price list  |
| <ul style="list-style-type: none"> <li>• Adjustable main arm 1,95 m (C25.41)</li> <li>• Adjustable boom with bending cylinder 4,23 m (C25.46)</li> </ul>     |  |   |
| <b>Bending arms for adjustable booms:</b>  |  |   |
| <ul style="list-style-type: none"> <li>• Bending arm 2.15 m (D21.23)</li> <li>• Bending arm 2.65 m (D21.33)</li> </ul>                                       |  |   |

### ATTACHMENTS

|               |                     |                     |                     |                     |                     |
|---------------|---------------------|---------------------|---------------------|---------------------|---------------------|
| Content SAE   | 0,48 m <sup>3</sup> | 0,93 m <sup>3</sup> | 1,17 m <sup>3</sup> | 1,53 m <sup>3</sup> | 1,65 m <sup>3</sup> |
| Cutting width | 600 mm              | 1000 mm             | 1200 mm             | 1500 mm             | 1600 mm             |
| Weight        | 620 kg              | 730 kg              | 830 kg              | 990 kg              | 1070 kg             |
| reach NLC (m) | 9,0                 | 8,5                 | 7,5                 | 6,5                 | 6,0                 |
| reach LC (m)  | 9,0                 | 9,0                 | 8,0                 | 6,5                 | 6,5                 |

stability acc. to ISO 10567, bulk weight 1.8 t/m<sup>3</sup>

## Work Areas Monoblock 5,95 m (C 25.3M)



| BENDING ARM LENGTHS   | 2,50m (D25.2) | 3,20m (D25.3) |
|-----------------------|---------------|---------------|
| A Max. cut-in height  | 9,10 m        | 9,36 m        |
| B Max. pouring height | 6,50 m        | 6,77 m        |
| C Max. trench depth   | 6,13 m        | 6,83 m        |
| D Max. reach          | 9,92 m        | 10,55 m       |
| Max. breakaway torque | 168* kN       | 168* kN       |
| Max. breakout force   | 161* kN       | 136* kN       |

Unit is equipped with monoblock attachment 5.95 m (C25.3M).

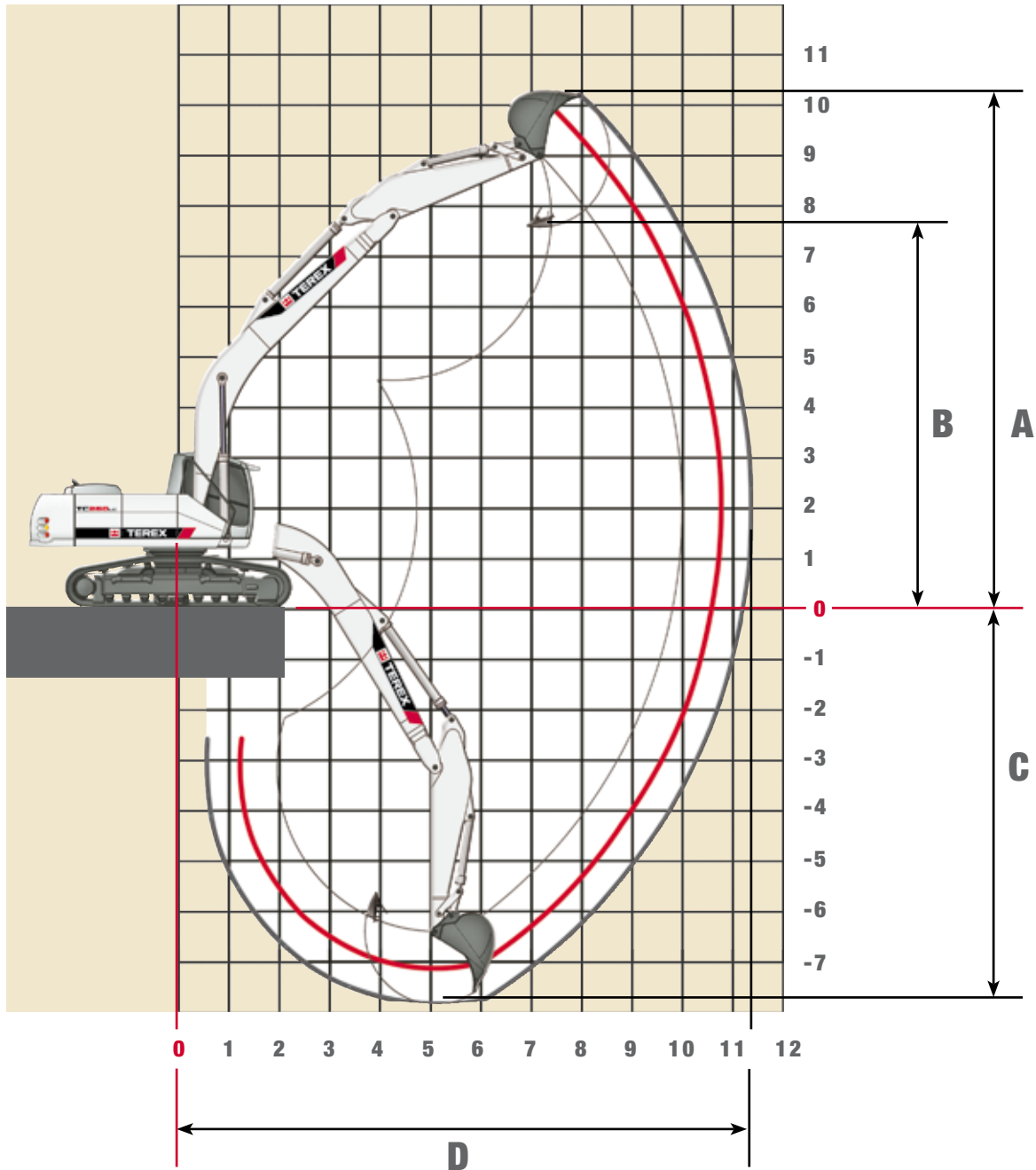
\* When pressure is switched on

## Lifting capacities Monoblock 5,95 m (C 25.3M)

### TC 260 LC Lifting capacity at 370 bar

| HEIGHT  | 3,0 m  |         | 4,5 m  |         | 6,0 m |         | 7,5 m |         | 9,0 m |         |
|---|--------|---------|--------|---------|-------|---------|-------|---------|-------|---------|
|   | FRONT  | LATERAL | FRONT  | LATERAL | FRONT | LATERAL | FRONT | LATERAL | FRONT | LATERAL |
| <b>Monoblock 5,95 m (C 25.3M) with bending arm 2,50 m (D 25.2) Max. reach 9.92 m</b>  |        |         |        |         |       |         |       |         |       |         |
| +9,0 m  |        |         |        |         |       |         |       |         |       |         |
| +7,5 m  |        |         |        |         |       |         |       |         |       |         |
| +6,0 m  |        |         |        |         | 9737* | 7282    |       |         |       |         |
| +4,5 m  |        |         | 13427* | 10705   | 10391 | 7039    | 7352  | 5088    |       |         |
| +3,0 m  |        |         | 15810  | 9926    | 10026 | 6717    | 7197  | 4947    |       |         |
| +1,5 m  |        |         | 15160  | 9393    | 9704  | 6433    | 7039  | 4803    |       |         |
| 0 m   |        |         | 14955  | 9225    | 9509  | 6263    | 6932  | 4705    |       |         |
| -1,5 m  | 15061* | 15061*  | 15034  | 9290    | 9491  | 6247    | 6949  | 4721    |       |         |
| -3,0 m  | 22419* | 18383   | 15250  | 9467    | 9627  | 6366    |       |         |       |         |
| -4,5 m  |        |         | 12605* | 9815    |       |         |       |         |       |         |
| <b>Monoblock 5,95 m (C 25.3M) with bending arm 3,20 m (D 25.3) Max. reach 10.55 m</b> |        |         |        |         |       |         |       |         |       |         |
| +9,0 m  |        |         |        |         |       |         |       |         |       |         |
| +7,5 m  |        |         |        |         |       |         |       |         |       |         |
| +6,0 m  |        |         |        |         |       |         | 7559  | 5264    |       |         |
| +4,5 m  |        |         |        |         | 9820* | 7158    | 7432  | 5164    |       |         |
| +3,0 m  |        |         | 15119* | 10153   | 10121 | 6786    | 7233  | 4968    | 5509  | 3811    |
| +1,5 m  |        |         | 15237  | 9434    | 9719  | 6431    | 7029  | 4782    | 5421  | 3730    |
| 0 m   |        |         | 14804  | 9078    | 9442  | 6187    | 6874  | 4641    |       |         |
| -1,5 m  |        |         | 14739  | 9024    | 9329  | 6088    | 6815  | 4588    |       |         |
| -3,0 m  | 22054* | 17723   | 14901  | 9157    | 9406  | 6156    | 6908  | 4672    |       |         |
| -4,5 m  | 20384* | 18242   | 14907* | 9443    | 9665  | 6384    |       |         |       |         |

The specified max. loading capacities in kilogram include a stability of 33% or are calculated at 87% of the hydraulic lifting power, as per ISO10567. These values are applicable at the tip of the arm with optimum positioning of the corresponding arm system and with the pressure switched on. \* Value limited due to hydraulics.

**Work Areas Monoblock 6,95 m (C 25.5M)**


| BENDING ARM LENGTHS   | 2,50m (D25.2) | 3,20m (D25.3) |
|-----------------------|---------------|---------------|
| A Max. cut-in height  | 9,81 m        | 10,08 m       |
| B Max. pouring height | 7,21 m        | 7,48 m        |
| C Max. trench depth   | 6,99 m        | 7,69 m        |
| D Max. reach          | 10,94 m       | 11,58 m       |
| Max. breakaway torque | 168* kN       | 168* kN       |
| Max. breakout force   | 161* kN       | 136* kN       |

Unit is equipped with monoblock attachment 6,95 m (C25.5M).

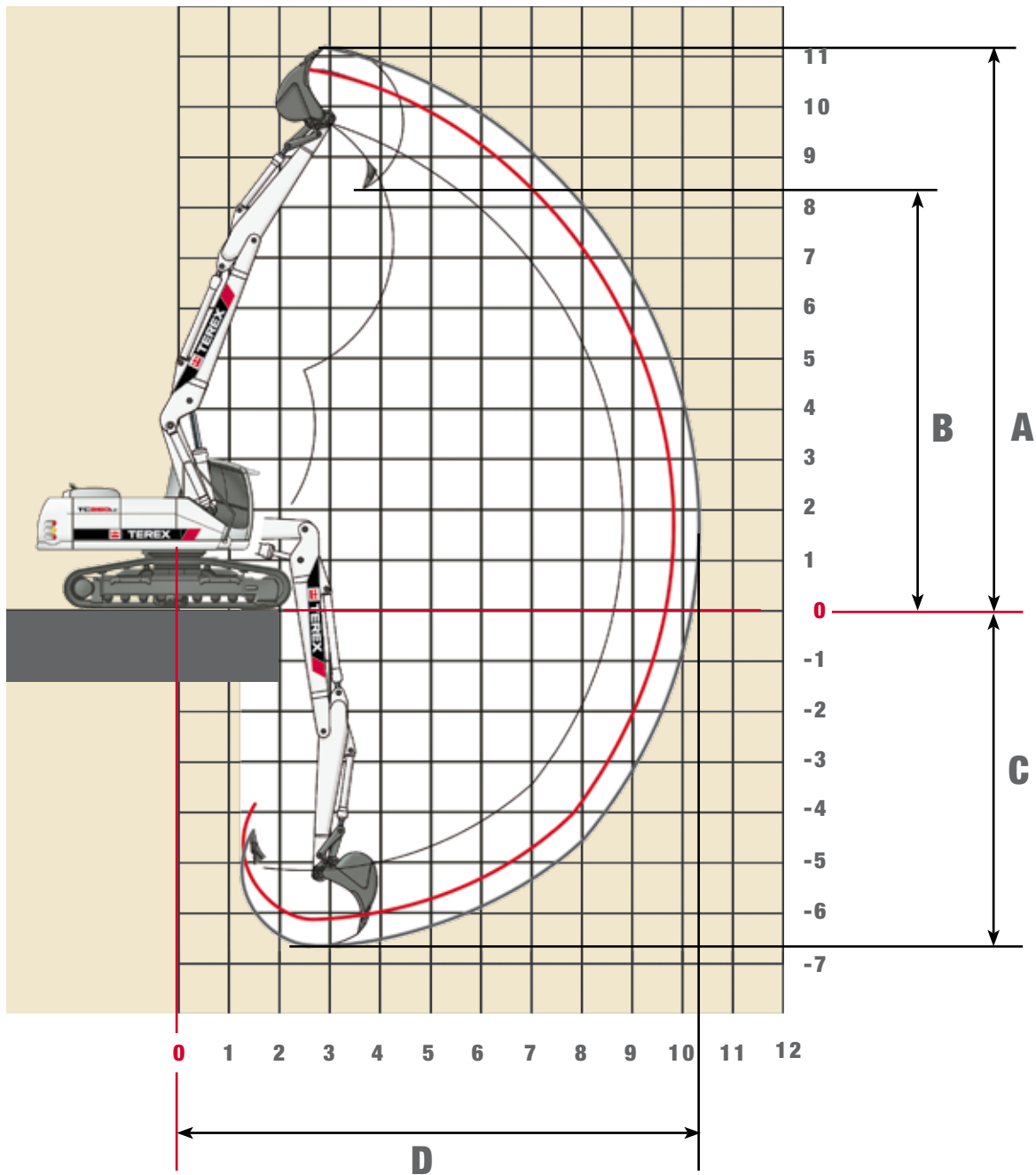
\* When pressure is switched on

## Lifting capacities Monoblock 6,95 m (C 25.5M)

### TC 260 LC Lifting capacity at 370 bar

| HEIGHT  | 3,0 m  |         | 4,5 m  |         | 6,0 m |         | 7,5 m |         | 9,0 m |         |
|---|--------|---------|--------|---------|-------|---------|-------|---------|-------|---------|
|   | FRONT  | LATERAL | FRONT  | LATERAL | FRONT | LATERAL | FRONT | LATERAL | FRONT | LATERAL |
| <b>Monoblock 6,95 m (C 25.5M) with bending arm 2,50 m (D 25.2) Max. reach 10,94 m</b> |        |         |        |         |       |         |       |         |       |         |
| +9,0 m  |        |         |        |         |       |         |       |         |       |         |
| +7,5 m  |        |         |        |         |       |         | 7490  | 5197    |       |         |
| +6,0 m  |        |         |        |         |       |         | 7428  | 5140    |       |         |
| +4,5 m  |        |         |        |         | 10120 | 6778    | 7238  | 4968    | 5496  | 3795    |
| +3,0 m  |        |         |        |         | 9646  | 6361    | 7010  | 4760    | 5399  | 3706    |
| +1,5 m  |        |         |        |         | 9296  | 6053    | 6809  | 4578    | 5297  | 3611    |
| 0 m   |        |         |        |         | 9125  | 5903    | 6678  | 4459    | 5228  | 3547    |
| -1,5 m  |        |         | 14574  | 8879    | 9122  | 5900    | 6649  | 4432    |       |         |
| -3,0 m  | 16875* | 16875*  | 14749  | 9023    | 9227  | 5993    | 6733  | 4508    |       |         |
| -4,5 m  |        |         | 13951* | 9274    | 9454  | 6193    |       |         |       |         |
| <b>Monoblock 6,95 m (C 25.5M) with bending arm 3,20 m (D 25.3) Max. reach 11,58 m</b> |        |         |        |         |       |         |       |         |       |         |
| +9,0 m  |        |         |        |         |       |         |       |         |       |         |
| +7,5 m  |        |         |        |         |       |         |       |         |       |         |
| +6,0 m  |        |         |        |         |       |         |       |         |       |         |
| +4,5 m  |        |         |        |         |       |         | 7527  | 5218    | 5625  | 3905    |
| +3,0 m  |        |         |        |         | 9700* | 6895    | 7301  | 5013    | 5536  | 3823    |
| +1,5 m  |        |         |        |         | 9731  | 6421    | 7031  | 4767    | 5400  | 3697    |
| 0 m   |        |         |        |         | 9284  | 6028    | 6782  | 4541    | 5264  | 3571    |
| -1,5 m  |        |         | 10619* | 8471    | 9019  | 5794    | 6603  | 4378    | 5160  | 3475    |
| -3,0 m  |        |         | 14169  | 8523    | 8926  | 5713    | 6514  | 4297    | 5123  | 3440    |
| -4,5 m  |        |         | 14337  | 8661    | 8993  | 5771    | 6554  | 4334    |       |         |

The specified max. loading capacities in kilogram include a stability of 33% or are calculated at 87% of the hydraulic lifting power, as per ISO10567. These values are applicable at the tip of the arm with optimum positioning of the corresponding arm system and with the pressure switched on. \* Value limited due to hydraulics.

**Work Areas Adjustable Boom 1,95 m (C 25.41) and 4,23 m (C25.46)**


| BENDING ARM LENGTHS   | 2.15m (D21.23) | 2.65m (D21.33) |
|-----------------------|----------------|----------------|
| A Max. cut-in height  | 10,68 m        | 11,10 m        |
| B Max. pouring height | 8,01 m         | 8,43 m         |
| C Max. trench depth   | 6,28 m         | 6,67 m         |
| D Max. reach          | 9,79 m         | 10,26 m        |
| Max. breakaway torque | 170 (185)* kN  | 170 (185)* kN  |
| Max. breakout force   | 138 (150)* kN  | 120 (131)* kN  |

Unit is fitted with adjustable main boom 1.95 m (C21.41) and adjustable boom 3.41 m (C21.46). \* When pressure is switched on

## Lifting capacities Adjustable Boom 1,95 m (C 25.41) and 4,23 m (C25.46)

### TC 260 LC

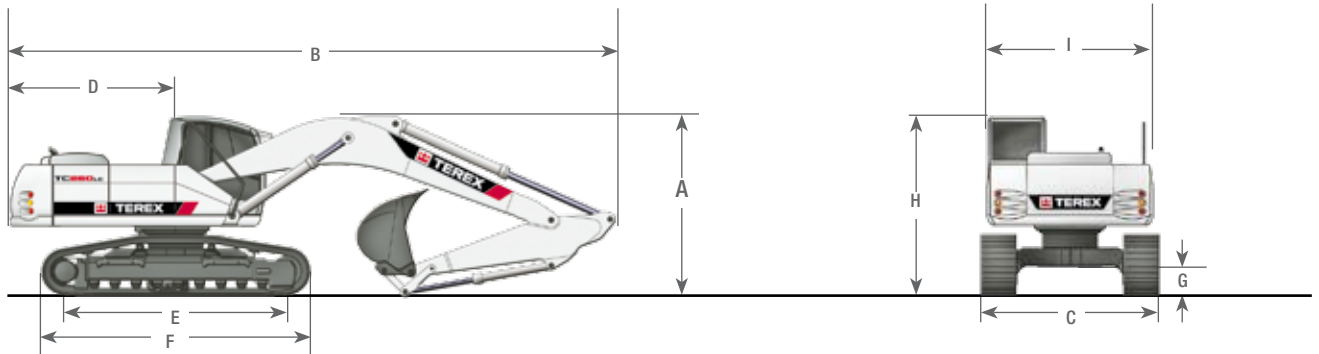
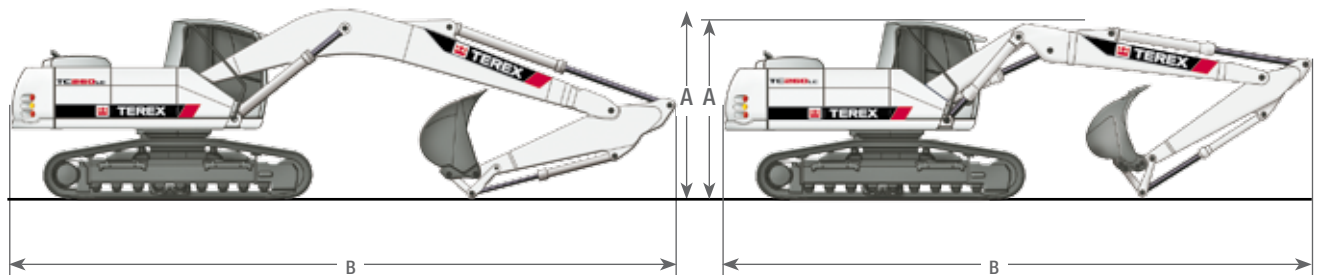
Lifting capacity at 360 bar

| HEIGHT   | 3.0 m  |         | 4.5 m  |         | 6.0 m  |         | 7.5 m |         | 9.0 m |         |
|--|--------|---------|--------|---------|--------|---------|-------|---------|-------|---------|
|  | FRONT  | LATERAL | FRONT  | LATERAL | FRONT  | LATERAL | FRONT | LATERAL | FRONT | LATERAL |
| <b>Adjustable boom 1.95 m (C 25.41) and 4,23 m (C25.46) with bending arm 2.15 m (D 21.23) Max. reach 9,79 m</b>  |        |         |        |         |        |         |       |         |       |         |
| +8.0 m   |        |         | 7875*  | 7875*   |        |         |       |         |       |         |
| +7.0 m   |        |         | 7603*  | 7603*   | 7236*  | 6827    |       |         |       |         |
| +6.0 m   | 9031*  | 9031*   | 8088*  | 8088*   | 7149*  | 6842    |       |         |       |         |
| +5.0 m   | 11209* | 11209*  | 9151*  | 9151*   | 7396*  | 6797    | 6546* | 4881    |       |         |
| +4.0 m   | 9543*  | 9543*   | 10156* | 9882    | 7813*  | 6745    | 6802* | 4912    | 6051* | 4401    |
| +3.0 m   | 9627*  | 9627*   | 11508* | 9758    | 8362*  | 6694    | 7020* | 4907    | 6687* | 4404    |
| +2.0 m   | 12055* | 12055*  | 12558* | 9703    | 8968*  | 6669*   | 7340* | 4870    | 6688  | 4379    |
| +1.0 m   | 14693* | 13890   | 13689* | 9702    | 9609*  | 6683    | 7371  | 4810    | 6641  | 4335    |
| 0 m  | 17097* | 13982*  | 14208* | 9756    | 9944*  | 6719    | 7291  | 4734    | 6583  | 4283    |
| -1.0 m   | 19025* | 14081   | 14281* | 9791    | 10014  | 6542    | 7216  | 4662    |       |         |
| -2.0 m   | 19393* | 13954   | 14400* | 9686    | 10124  | 6376    | 7060* | 4642    |       |         |
| -3.0 m   | 19648* | 13933   | 14723* | 9530    | 10029  | 6288    |       |         |       |         |
| -4.0 m   | 19313* | 13798   | 13539* | 9414    |        |         |       |         |       |         |
| <b>Adjustable boom 1.95 m (C 25.41) and 4,23 m (C25.46) with bending arm 2.65 m (D 21.33) Max. reach 10,26 m</b> |        |         |        |         |        |         |       |         |       |         |
| +8.0 m   |        |         | 6876*  | 6876*   | 6514*  | 6514*   |       |         |       |         |
| +7.0 m   |        |         | 6772*  | 6772*   | 6660*  | 6660*   |       |         |       |         |
| +6.0 m   |        |         | 7270*  | 7270*   | 6763*  | 6763*   | 6120* | 4952    |       |         |
| +5.0 m   | 9711*  | 9711*   | 8318*  | 8318*   | 7053*  | 6825    | 6275* | 5013    | 5919* | 4491    |
| +4.0 m   | 10437* | 10437*  | 9531*  | 9531*   | 7471*  | 6760    | 6447* | 5035    | 6303* | 4518    |
| +3.0 m   | 10416* | 10416*  | 10760* | 9792    | 8010*  | 6696    | 6713* | 5025    | 6479* | 4512    |
| +2.0 m   | 12547* | 12547*  | 12177* | 9691    | 8615*  | 6656    | 7047* | 4984    | 6729  | 4479    |
| +1.0 m   | 14373* | 13818   | 13553* | 9671    | 9249*  | 6642    | 7318  | 4917    | 6727  | 4424    |
| 0 m  | 16330* | 13882   | 14120* | 9694*   | 9847*  | 6681*   | 7361  | 4826    | 6656  | 4355    |
| -1.0 m   | 18373* | 14001   | 14185* | 9775    | 9940   | 6661    | 7280  | 4733    | 6584  | 4285    |
| -2.0 m   | 19232* | 13978   | 14284* | 9704    | 10056* | 6486    | 7204  | 4658    | 6555  | 4256    |
| -3.0 m   | 19436* | 13898   | 14455* | 9643    | 10059  | 6323    |       |         |       |         |
| -4.0 m   | 19974* | 13865   | 14655* | 9441    | 9183*  | 6278    |       |         |       |         |

The specified max. loading capacities in kilogrammes include a stability of 33% or are calculated at 87% of the hydraulic lifting power, as per ISO10567.

These values are applicable at the tip of the arm with optimum positioning of the corresponding arm system and when the pressure is switched on. \*Value limited due to hydraulics.

## Dimensions

**Monoblock 5,95 m (C25.3M)**

**Monoblock 6,95 m (C25.5M)**
**Adjustable boom 1,95 m (C25.41) and 4,23 m (C25.46)**


| A TRANSPORT HEIGHT  |         | B TRANSPORT LENGTHS                                       |         |
|---|---------|---|---------|
| Monoblock 5.95 m (C25.3M) with bending arm 2.50 m (D25.2) | 3,05 m  | Monoblock 5.95 m (C25.3M) with bending arm 2.50 m (D25.2) | 10,12 m |
| Monoblock 5.95 m (C25.3M) with bending arm 3.20 m (D25.3) | 3,35 m  | Monoblock 5.95 m (C25.3M) with bending arm 3.20 m (D25.3) | 10,15 m |
| Monoblock 6.95 m (C25.5M) with bending arm 2.50 m (D25.2) | 3,20 m  | Monoblock 6.95 m (C25.5M) with bending arm 2.50 m (D25.2) | 11,14 m |
| Monoblock 6.95 m (C25.5M) with bending arm 3.20 m (D25.3) | 3,35 m  | Monoblock 6.95 m (C25.5M) with bending arm 3.20 m (D25.3) | 11,15 m |
| Adjustable boom, 1.95 m (C25.41) and 4.23 m (C25.46)      |         | Adjustable boom, 1.95 m (C25.41) and 4.23 m (C25.46)      |         |
| with bending arm 2.15 m (D21.23)                          | 3,15 m  | with bending arm 2.15 m (D21.23)                          | 9,88 m  |
| with bending arm 2.65 m (D21.33)                          | 3,15 m  | with bending arm 2.65 m (D21.33)                          | 9,93 m  |
| C TRANSPORT WIDTHS  |         | D REAR PIVOTING RADIUS                                    |         |
|   | SPUR LC |   | 2,80 m  |
|   | 2,40 m  | E SUPPORTING CHAIN LENGTH                                 | 3,70 m  |
| Ground plate width 500 mm                                 |         | F DRIVE LENGTH  | 4,53 m  |
| Ground plate width 600 mm                                 | 3,00 m  | G GROUND CLEARANCE  | 0,44 m  |
| Ground plate width 700 mm                                 | 3,10 m  | H HEIGHT ABOVE CAB  | 3,01 m  |
| Ground plate width 800 mm                                 | 3,20 m  | I UPPER WAGON TRANSPORT WIDTH                             | 2,80 m  |

We reserve the right to make structural changes, data is informational only, units comply with the new European safety guidelines.



TEREX Atlas  
 Atlasstr. 6  
 27777 Ganderkesee  
 Deutschland  
 Tel. +49 (0) 4222 / 954-0  
 Fax: +49 (0) 4222 / 954-343

www.terex.de  
 E-Mail: info@terex-atlas.de